



**India Meteorological Department
(Ministry of Earth Sciences)**

HOURLY UPDATE ON CYCLONIC STORM “REMAL”

BULLETIN NO. 01

DATE: 26-05-2024

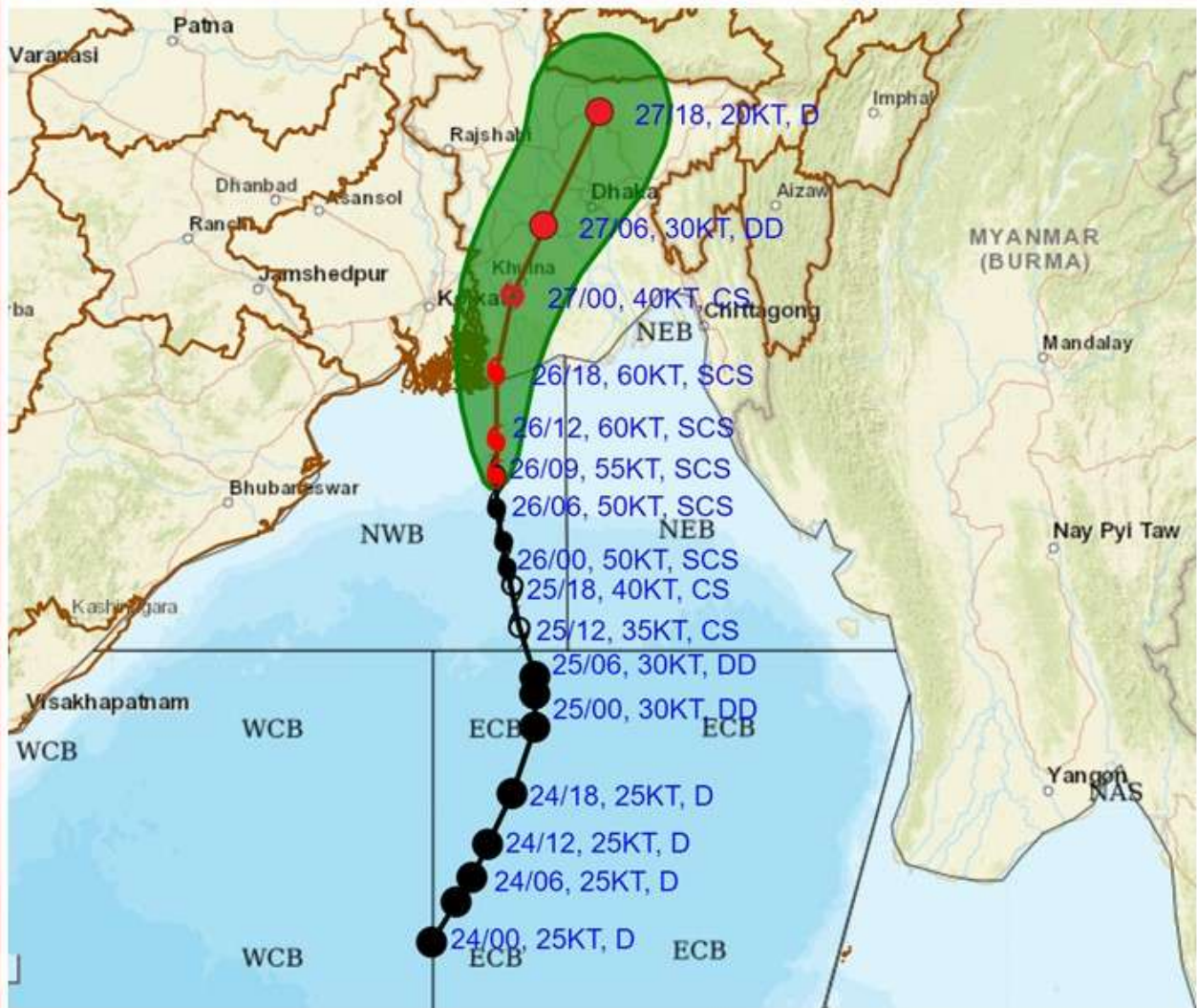
TIME OF ISSUE: 1900 HRS IST

DATE/TIME(IST) OF OBSERVATION	BASED ON 26-05-2024 (1730 HRS IST)
LOCATION LATITUDE/LONGITUDE	The Severe Cyclonic Storm “Remal” (pronounced as “Re-Mal”) over the North Bay of Bengal moved nearly northwards, with a speed of 16 kmph during past 06 hours and lay centered at 1730 hrs IST of today, the 26th May, 2024 over the same region near latitude 21.1°N and longitude 89.2°E about 130 km east-southeast of Sagar Islands (West Bengal), 140 km southwest of Khepupara (Bangladesh), 140 km south-southeast of Canning (West Bengal) and 160 km south-southwest of Mongla (Bangladesh). The outer cloud band lies over coastal areas of Bangladesh & West Bengal, India. The landfall process will commence in next few hours.
CURRENT INTENSITY NEAR CENTRE	110-120 Kmph Gusting To 135 Kmph.
OBSERVATIONS (1730 HOURS IST)	WINDSPEED (Kmph):- Canning-38 ,Digha-50 RAINFALL (since 0830 IST in mm) :- Digha-38, Haldia-31.
FORECAST MOVEMENT, INTENSITY AND LANDFALL	It is very likely to continue to move nearly northwards and cross Bangladesh and adjoining West Bengal coasts between Sagar Island and Khepupara, close to southwest of Mongla (Bangladesh) by midnight of today, the 26 th may 2024 as a severe cyclonic storm with maximum sustained wind speed of 110-120 kmph gusting to 135 kmph.
FORECAST WIND	(a) Bay of Bengal: ❖ Gale wind speed reaching 80-90 kmph gusting to 100 kmph is prevailing over central Bay of Bengal and likely to decrease gradually becoming Squally wind speed reaching 50-60 kmph gusting to 70 kmph till morning of 27 th May. ❖ Gale wind speed reaching 110-120 kmph gusting to 135 kmph prevailing over North Bay of Bengal is likely to continue till midnight of 26 th May. It is likely decrease thereafter becoming 70-80 kmph gusting to 90 kmph by morning on 27 th May and squally wind speed reaching 45-55 kmph gusting to 65 kmph by evening of 27 th May. (b) Along & off Bangladesh and West Bengal coasts: ❖ Gale wind speed reaching 80-90 kmph gusting to 100 kmph is prevailing along & off Bangladesh and West Bengal & adjoining North Odisha coasts and likely to become 110-120 kmph gusting to 135 kmph during next 2 hours. It is likely to continue till early morning of 27 th May. It is likely to decrease thereafter to become 60-70 kmph gusting to 80 kmph by afternoon and squally wind 50-60 kmph gusting to 70 kmph by night of 27 th May. ❖ Squally wind speed reaching 50-60 kmph gusting to 70 kmph is prevailing over Howrah, Hoogly, and Kolkata and East Medinipur

	<p>districts. It will increase gradually becoming Gale wind speed reaching 70-80 kmph gusting to 90 kmph over these districts during night of 26th May except East Medinipur where the wind speed may reach up to 60-70 kmph gusting to 80 kmph during the same period.</p> <p>(c) Along & off North Odisha coasts: Squally wind speed reaching 50-60 kmph gusting to 70 kmph is likely to prevail till 27th May morning.</p> <p>(d) Northeastern States: Squally wind speed reaching 50-60 kmph gusting to 70 kmph is likely over Mizoram Tripura & south Manipur on 26th & 27th May and 40-50 kmph gusting to 60 kmph is likely over South Assam and Meghalaya on 27th May.</p>
FORECAST RAINFALL	<p>Heavy Rainfall Warning:</p> <p>(a) West Bengal: Light to moderate rainfall at most places with heavy to very heavy rainfall at a few places is likely over coastal districts of West Bengal and eastern districts of Gangetic West Bengal adjacent to Bangladesh on 26th & 27th with isolated extremely heavy rainfall (≥ 20 cm) over these districts on 26th May. The peak rainfall activity is likely during noon of 26th to noon of 27th May. Light to moderate rainfall at most places with heavy to very heavy rainfall at isolated places likely over eastern districts of Sub-Himalayan West Bengal on 27th and 28th May.</p> <p>(b) Odisha: Light to moderate rainfall at most places with isolated heavy rainfall likely over North Coastal Odisha on 26th May.</p> <p>(c) Northeastern States: Light to moderate rainfall at most places with heavy to very heavy rainfall at isolated places is likely over Mizoram, Tripura and South Manipur on 26th and over Assam, Meghalaya, Arunachal Pradesh, Nagaland, Mizoram, Manipur & Tripura on 27th & 28th May. Isolated extremely heavy rainfall (≥ 20 cm) is also likely over Assam, Meghalaya on 27th & 28th May, Arunachal Pradesh on 28th May and Mizoram & Tripura on 27th May.</p>
FORECAST STORM SURGE	<p>Storm surge of about 1 meter height above astronomical tide is likely to inundate low lying areas of coastal West Bengal and 3-4 m above astronomical tide likely to inundate low lying areas of coastal Bangladesh around the time of landfall</p>



FORECAST TRACK ALONGWITH CONE OF UNCERTAINTY IN ASSOCIATION WITH SEVERE CYCLONIC STORM 'REMAL' OVER NORTH BAY OF BENGAL BASED ON 0900 UTC (1430 IST) OF 26TH MAY 2024.



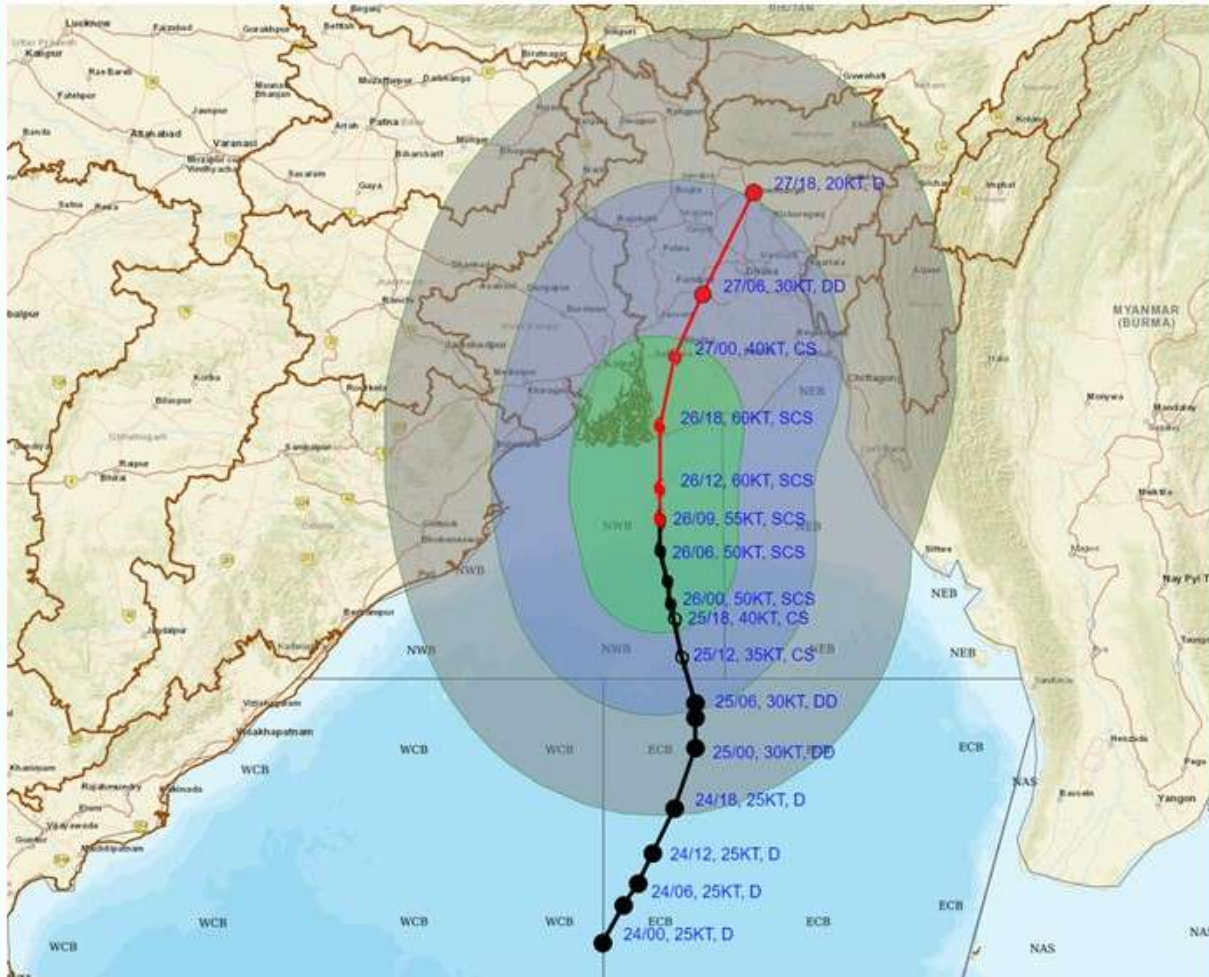
DATE/TIME IN UTC
 IST=UTC + 0530
 L: LOW PRESSURE AREA
 WML: WELL MARKED LOW PRESSURE AREA
 D: DEPRESSION (17-27 KT)
 DD: DEEP DEPRESSION (28-33 KT)
 CS: CYCLONIC STORM (34-47 KT)
 SCS: SEVERE CYCLONIC STORM (48-63KT)
 VSCS: VERY SEVERE CYCLONIC STORM (64-89 KT)
 ESCS: EXTREMELY SEVERE CYCLONIC STORM (90-119 KT)
 SuCS: SUPER CYCLONIC STORM (≥ 120 KT)

- LESS THAN 34 KT
- 34-47 KT
- ≥ 48 KT
- OBSERVED TRACK
- FORECAST TRACK
- ▲ CONE OF UNCERTAINTY

Forecast Date and Time (UTC)	DISTANCE (KM) AND DIRECTION FROM STATIONS			
	Canning	Sagar Island	Khepupara	Mongla
26.05.24/0900	190, SSE	160, SE	180, SSW	220, S
26.05.24/1200	150, SSE	130, SE	150, SW	180, S
26.05.24/1800	80, SE	110, E	100, WSW	90, SSW



FORECAST TRACK ALONGWITH QUADRANT WIND DISTRIBUTION IN ASSOCIATION WITH SEVERE CYCLONIC STORM 'REMAL' OVER NORTH BAY OF BENGAL BASED ON 0900 UTC (1430 IST) OF 26TH MAY 2024.



DATE/TIME IN UTC
IST=UTC + 0530

L: LOW PRESSURE AREA

WML: WELL MARKED LOW PRESSURE AREA

D: DEPRESSION (17-27 KT)

DD: DEEP DEPRESSION (28-33 KT)

CS: CYCLONIC STORM (34-47 KT)

SCS: SEVERE CYCLONIC STORM (48-63KT)

VSCS: VERY SEVERE CYCLONIC STORM (64-89 KT)

ESCS: EXTREMELY SEVERE CYCLONIC STORM (90-119 KT)

SuCS: SUPER CYCLONIC STORM (≥ 120 KT)

● LESS THAN 34 KT

○ 34-47 KT

○ ≥ 48 KT

— OBSERVED TRACK

— FORECAST TRACK

▲ CONE OF UNCERTAINTY

AREA OF MAXIMUM SUSTAINED WIND SPEED:

■ 28-33 KT (52-61 KMPH)

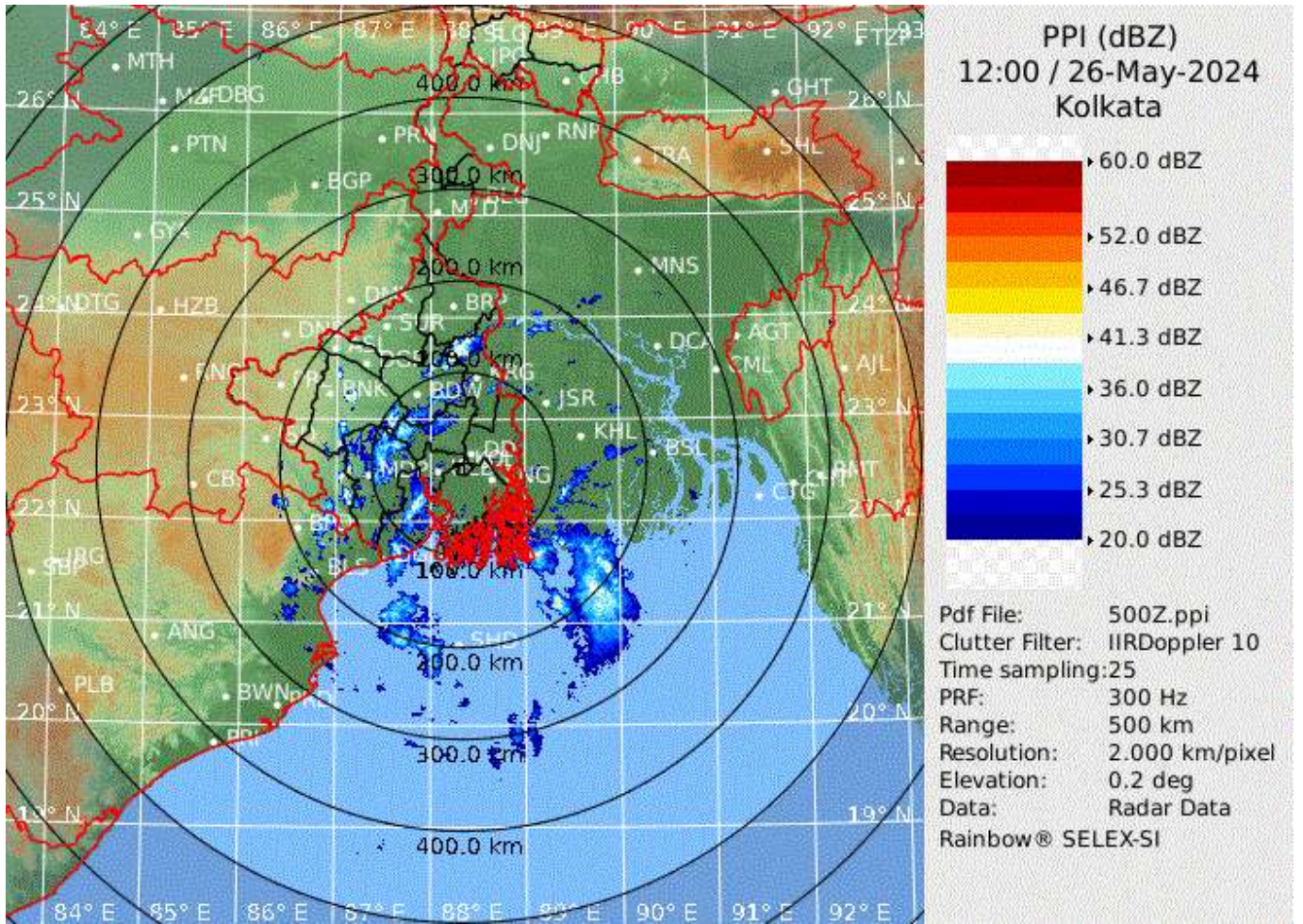
■ 34-49 KT (62-91 KMPH)

■ 50-63 KT (92-117 KMPH)

■ ≥ 64 KT (≥118 KMPH)

IMPACT OVER THE SEA

MSW (knot/kmph)	Impact	Action
28-33 (52-61)	Very rough seas	Total suspension of fishing operations
34-49 (62-91)	High to very high seas	Total suspension of fishing operations
50-63 (92-117)	Very high seas	Total suspension of fishing operations
≥ 64 (≥118)	Phenomenal	Total suspension of fishing operations



KOLKATA RADAR IMAGERY AT 1730 HOURS IST of 26th MAY 2024